



Fiber laser coder

# SmartLase<sup>®</sup> F250

Reliable. Compact. Intelligent.



# Power in a small package

## The intelligent choice for your smart factory

The SmartLase® F250 fiber laser coder delivers superb code quality in high-speed applications, even with increasing code complexity of 1D and 2D codes, all in an easy-to-integrate and easy-to-operate compact unit.

- High-quality, chemical-free and permanent coding on high-density substrates
- Lower operating expenses (OPEX) with fewer line stoppages, higher efficiency and no consumables
- Easy to integrate and operate with intuitive user interface for improved operator's efficiency and reduced risk of human errors
- Industry 4.0 ready



## Easy to use and integrate



**Industry 4.0 ready**  
Supports industrial interfaces such as Ethernet/IP, PROFINET, NGPCL and full-featured CoLOS® software support

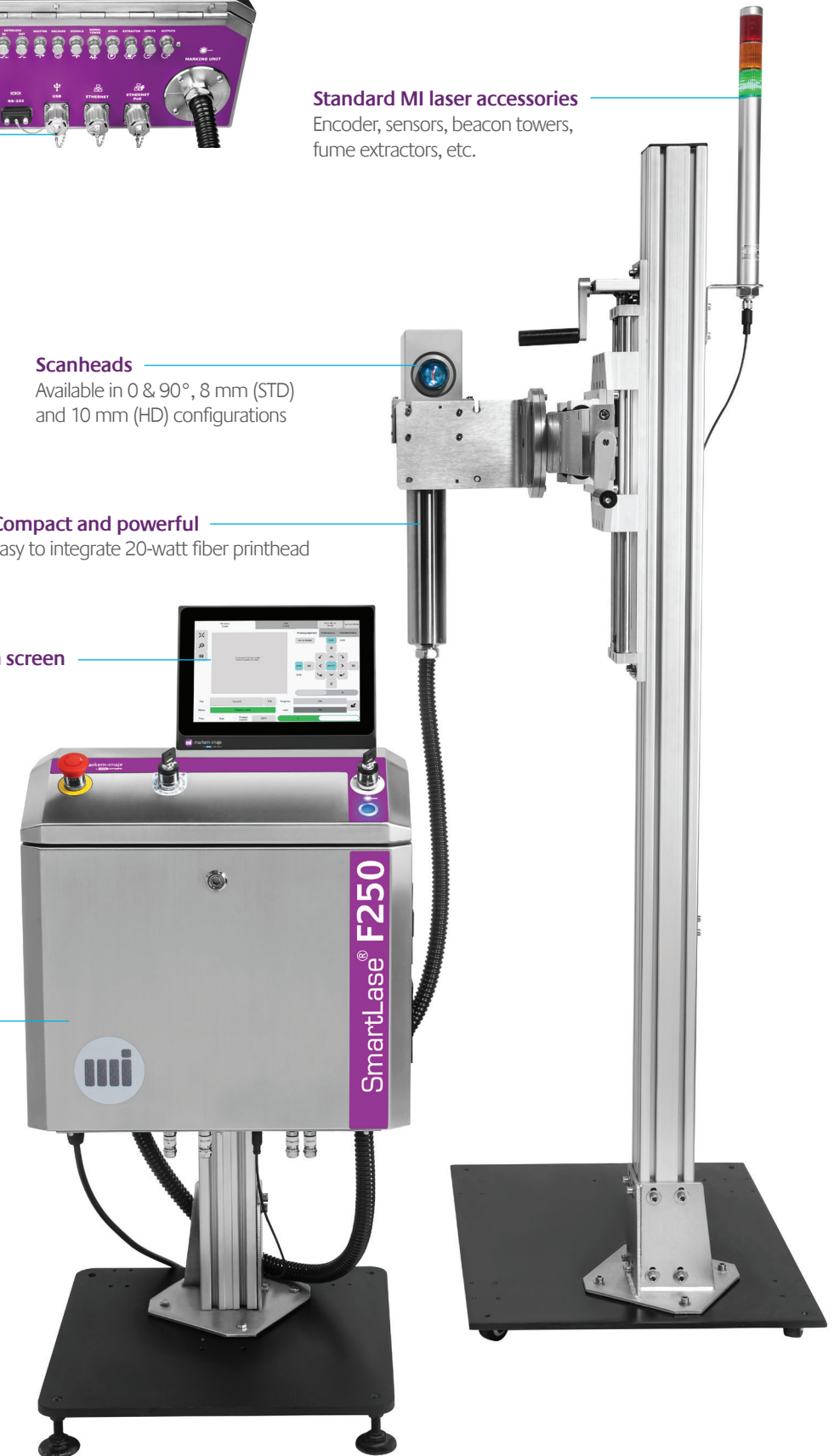
**Standard MI laser accessories**  
Encoder, sensors, beacon towers, fume extractors, etc.

**Scanheads**  
Available in 0 & 90°, 8 mm (STD) and 10 mm (HD) configurations

**Compact and powerful**  
Easy to integrate 20-watt fiber printhead

**250 mm (10.1") touch screen**  
User interface (IP66)

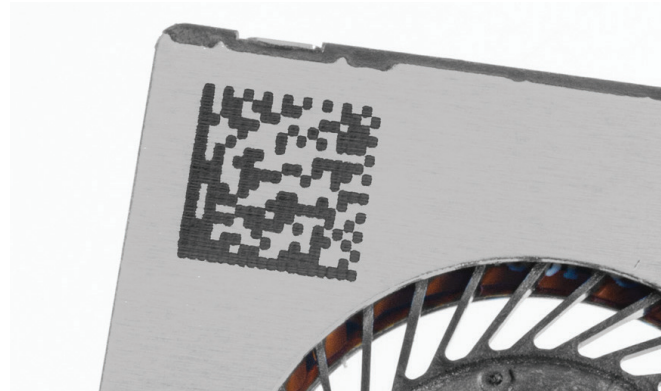
**Industrial grade**  
Controller and printhead (IP55)





# Applications

Markem-Imaje is committed to helping you achieve the best quality codes for your specific application. We provide customized sample print test support that considers your code, content, line speed and substrate to ensure you have the 'just right' laser wavelength, power and lens solution.



**Food and beverage:** Bare metals, metalized foil packaging, plastics, aluminum and anodized aluminum containers or caps

**Pharma:** Aseptic packaging, blister packs, vial enclosures

**Electrical:** Metal and plastic parts (ABS, HDPE), wire jackets

**Automotive:** Metal (steel, copper, titanium, aluminum) and plastic parts (POM, polycarbonate, polystyrene)

# The SmartLase F250

## Crisp, superb quality, permanent codes

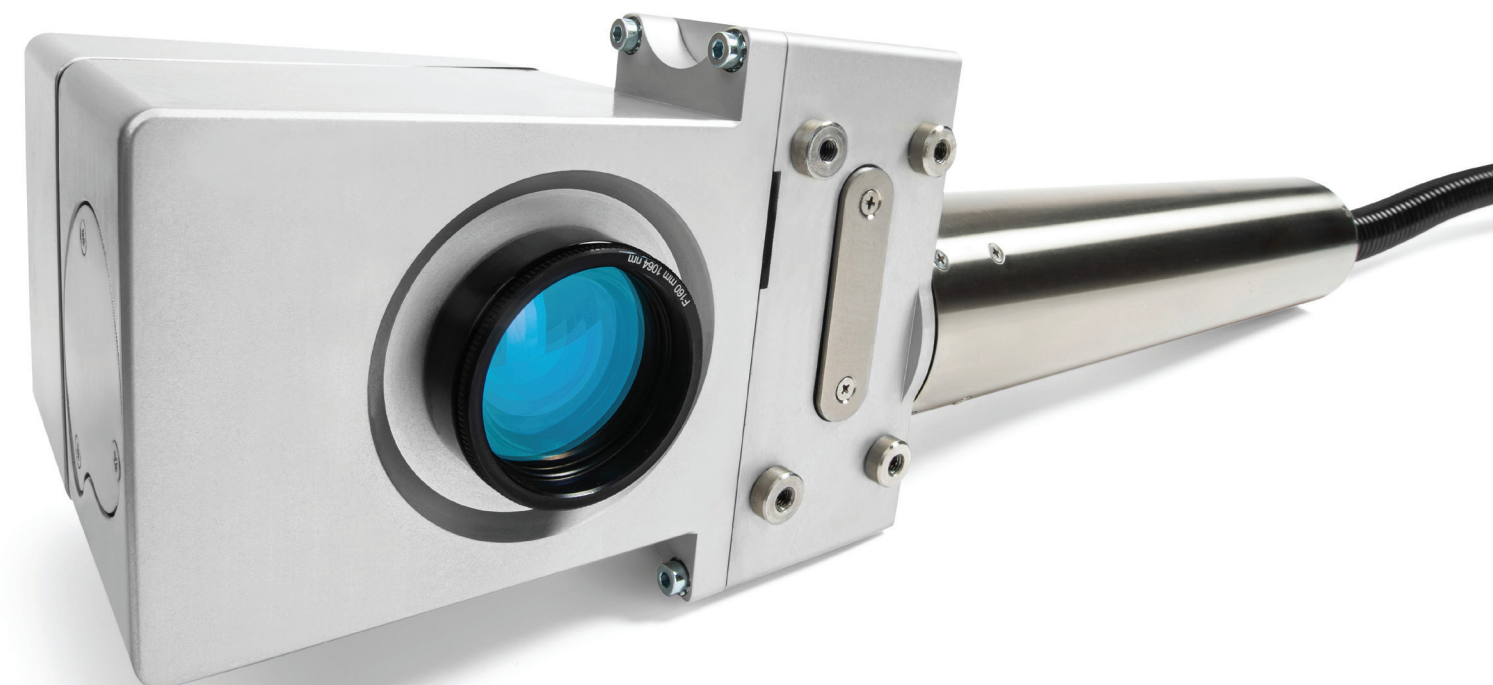
- Clean, readable and traceable even at high line speeds and product throughput, minimizing rework and recall costs
- Permanent, indelible marking prevents counterfeiting, protecting brand integrity
- High-performance digital galvanometers are driven by a unique algorithm

## Lower OpEx, higher efficiency and chemical-free

- Lower operating expenses by eliminating the cost of consumables and external cooling
- Virtually maintenance free to increase Overall Equipment Efficiency (OEE) and minimize production losses with fewer line stoppages
- Clean and compliant production supports your sustainability goals by eliminating chemical components

## Industry 4.0 ready, rugged and safe

- Industry 4.0 optimized with industrial interfaces such as Ethernet/IP, PROFINET, NGPCL and full-featured support for CoLOS<sup>®</sup> software (part of the Systech Packaging Intelligence Suite<sup>™</sup>), enabling seamless integration with complex plant automation and manufacturing execution systems (MES)
- Reliable operation in harsh, dusty and humid manufacturing environments with an IP55 controller unit and printhead
- Meets highest safety standards for E-stop and interlock circuits as per ISO 13849-1 / PL<sub>e</sub>







## Intelligent solutions to connect and protect your products

**Systech Packaging Intelligence Suite™** | We understand the operational complexity of running multiple packaging lines in the most efficient way without downtime. Optimize packaging processes with automated solutions to minimize waste, drive efficiency and achieve compliance in any market.

- Manage complex messages and package layouts
- Eliminate incorrectly coded and packaged products
- Maximize uptime and overall equipment effectiveness (OEE)

**Systech Brand Protection Suite™** | Our solutions transform a mark or code into a source of smart decisions with real-time supply chain insight, actionable data and digital connectivity. We've built upon decades of product identification and traceability expertise to develop a fully integrated platform that empowers you to authenticate and track every product—from production to your consumer's hands.

- Achieve critical sustainability and compliance objectives
- Connect, protect and track products across the supply chain
- Strengthen consumer confidence in your brand



Packaging Operations

Distribution

Point of Sale

Consumer

## Markem-Imaje reliability and service support

MI ensures peace of mind with our comprehensive service portfolio. Our global team of technical experts is here to help you increase production output, reduce downtime and optimize printer performance—from startup and training through upkeep and repairs.

We are committed to providing the best customer service and support possible, using the method that's most convenient for you.



### Online and remote expert resources

Quickly recover from unexpected technical and mechanical issues with live helpdesk support including remote video capabilities

Resolve technical issues yourself anytime with the help of our intelligent self-support solution, Miva



### On-demand consumables, repairs and spares

Plan ahead with consumable and maintenance agreements tailored to meet your business needs

Order and track spare parts and consumables as you need them with our online portal



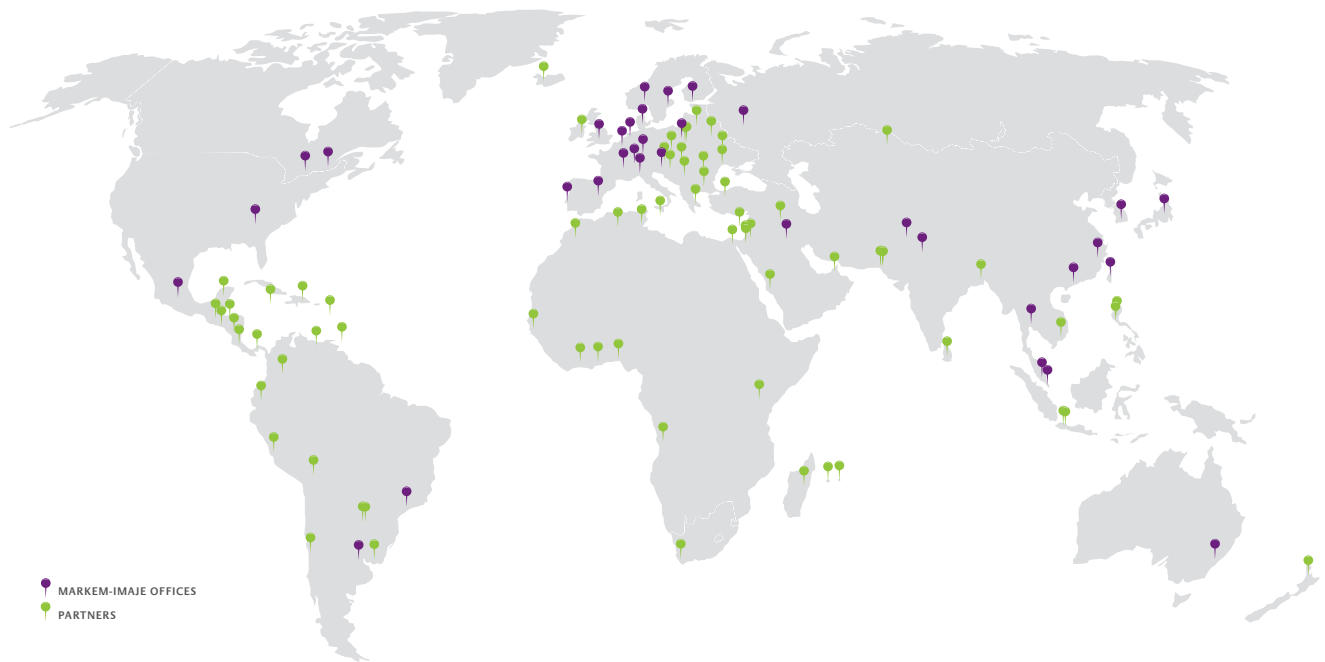
### Personalized, scalable rental program

Design a turnkey coding solution that perfectly fits your unique needs with Confidence 360 — our flexible rental program, giving you cost predictability

# About Markem-Imaje

Markem-Imaje, a wholly owned subsidiary of Dover Corporation, connects products and protects brands through intelligent identification, traceability and consumer engagement solutions. We offer the industry's most comprehensive range of marking and coding systems seamlessly integrated with trusted software, services and consumables. Over 50,000 customers worldwide partner with us to help them unlock the power of information in codes.

With decades of proven expertise provided through the most extensive global network, we empower our customers to optimize supply chain efficiencies, achieve sustainability and compliance objectives, keep products safe and engage their consumers. This is intelligence, beyond the mark.



150 Congress Street  
Keene, NH 03431  
United States of America  
Tel: 800-258-5356

100 Chastain Center Blvd.,  
Suite 165  
Kennesaw, GA 30144  
United States of America  
Tel: 770-421-7700